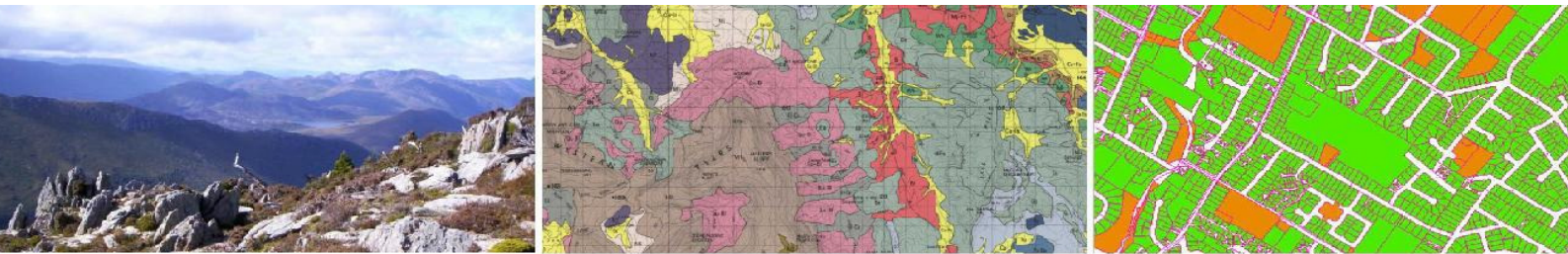


---

# ***Esk Mapping & GIS Capability Statement***

---



Prepared by  
Esk Mapping & GIS  
15<sup>th</sup> June 2011



## Table of Contents

1	Overview .....	3
2	Services currently provided .....	3
2.1	Location .....	5
2.2	Data .....	3
2.3	Imagery .....	4
2.4	Mapping.....	4
2.5	Analysis .....	4
2.6	Corporate GIS .....	4
2.7	GIS Support.....	4
3	Software.....	5
4	Closing.....	5

## 1 Overview

**Esk Mapping & GIS** was established in 2010 to service the spatial needs of the agriculture, resources and utilities industries as well as the various levels of government. Founded by Tim Bates and Steve Giudici, who have over 27 combined years of GIS and spatial data management experience, the company aims to service specific client needs in GIS analysis projects, comprehensive Business System Reviews (with a GIS focus), GIS support services, and assessments and management planning for forestry, vegetation, property and natural resources.

With approximately 6 employees at their disposal, **Esk Mapping & GIS** provide specialist services in:

- GIS data analysis,
- Map design and production,
- GIS programming and customisation,
- Spatial data collection (GPS and non-GPS) and ground-truthing,
- Forest resource inventories,
- Property boundary investigation,
- GIS Project Management, and
- GIS support is also provided as an on-site service or remote (on-call), depending on the client's requirements.

**Esk Mapping & GIS** strive to become known as the preferred GIS and Mapping service provider in the market. This will be achieved with the lasting philosophies of environmental sustainability and good corporate citizenship, coupled with productive business partnerships for provision of key (niche) skills and a flexible, can-do approach.

## 2 Services currently provided

### 2.1 GPS Asset surveys

1. Subdivision/utilities infrastructure etc:
  - a. Differentially corrected and real-time sub-metre and decimeter accuracy using Trimble and Ashtech GPS equipment, uncorrected, dGPS and real-time (approx +/- 20mm horizontal, and +/- 30mm vertical accuracy).
  - b. Uncorrected 1m+ accuracy using Garmin eTrex.

### 2.2 Data

1. GIS dataset creation from:
  - a. GPS data,
  - b. Tabular data (spreadsheets, database files, lists of known locations etc),
  - c. Imagery (georeferencing and interpretation of aerial photos, scanned images, title plans, engineering drawings etc).
2. GIS data investigation and procurement according to client needs.

## 2.3 Imagery

1. Procurement,
2. Processing and integration into corporate/in-house GIS',
3. Orthorectification, and
4. Mosaicing.

## 2.4 Mapping

1. Map production using client, **Esk Mapping & GIS** and/or third party data.
2. Google Earth files from GIS/GPS data, including custom legends and client logo appearing over the Google imagery.
3. Large-scale plots (A2, A1 and A3) on heavy coated, photo or standard paper. Colour or black and white.
4. For planning, operational, safety, environmental and legal requirements.

## 2.5 Analysis

1. Spatial data analysis. E.g. "How many land parcels would be affected by a pipeline in a given location" or "Using current rainfall, soil and temperature data, identify target sites with broad suitability to establish X type of crop" etc.
2. Cost-benefit analyses specific to project/client requirements. E.g. "Given X constraints and costs per unit, where is the best location for the infrastructure?" etc.
3. Landscape analysis.

## 2.6 Corporate GIS

1. Investigation, reporting, recommendations and delivery of efficient, secure GIS within a business.
2. Customisation of GIS software to perform specific functions within the client's business.
3. Design and programming of custom corporate GIS modules, and field data capture programs:
  - a. ArcView 3.x
  - b. ArcGIS 8.x, 9.x, and 10
  - c. ArcPad
  - d. VB.net, and
  - e. C#, among others.

## 2.7 GIS Support

1. Ongoing or 'as-needs' GIS support function within a business. Either in-house or remote, or a combination of both.
2. Staff training in GIS and GPS.
3. Create custom user-manuals for in-house or proprietary GIS.
4. Documentation of processes, procedures and workflows etc for existing spatial systems and data-flows, as well as for new installations.

### 3 Location

**Esk Mapping & GIS** currently have offices in:

- Launceston,
- Hobart, and
- Burnie (part-time).

We have ongoing clients across Tasmania and also in northern NSW.

### 4 Software

**Esk Mapping & GIS** use ESRI GIS software, and Ashtech and Trimble GPS hardware, and can supply quotations and manage installation and training.

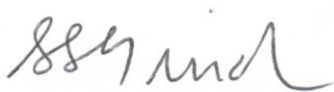
### 5 Closing

If you have a need for assistance in spatial (GIS and/or GPS) data – **Esk Mapping & GIS** can help!

Yours Sincerely,

A handwritten signature in blue ink, appearing to read "Tim Bates".

Tim Bates

A handwritten signature in blue ink, appearing to read "Steve Giudici".

and

Steve Giudici

**Principals**  
**Esk Mapping & GIS**